

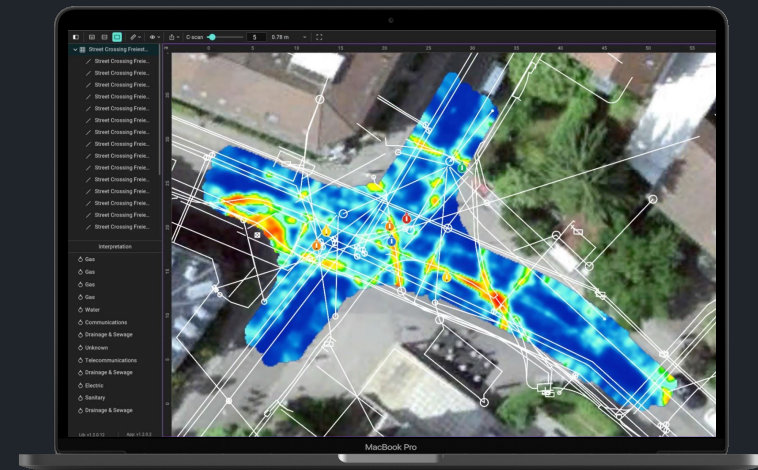


A connected digital ecosystem to map the subsurface

Risto Doncev

Chief Product Officer
Screening Eagle Technologies

Zürich, 6 September 2022





Screening Eagle

Pioneering Company in Inspection Tech

Swiss Engineering



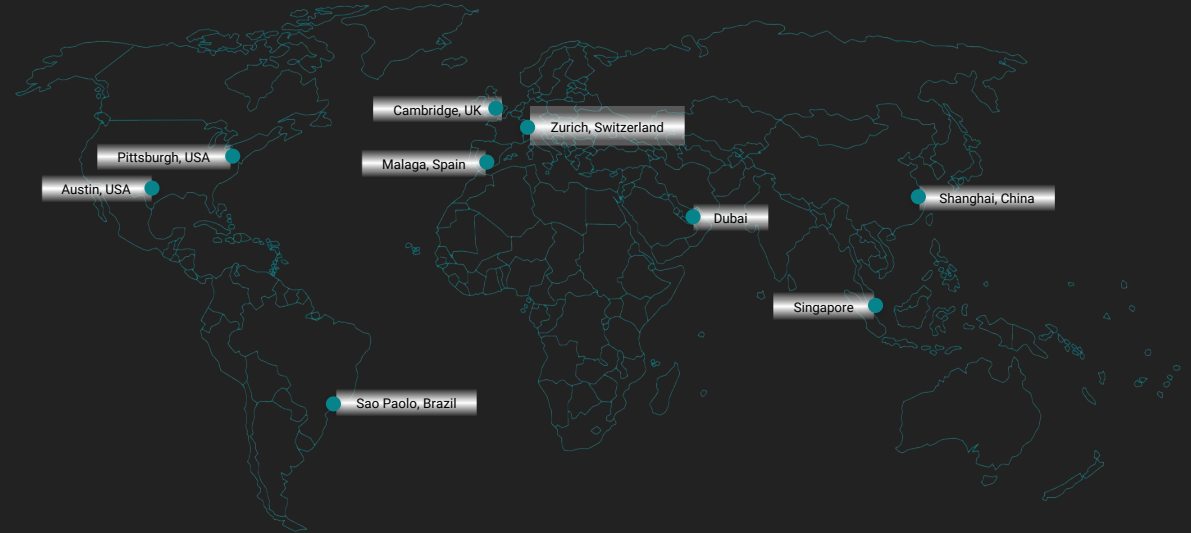
Leading NDT sensors
since 1954



Software & Robotics
since 2015



Global Network



300
Employees

9
Commercial offices

3
R&D sites

>200
Distributors

>100
Countries



Satellites map every corner of our planet



Make the invisible visible!



**every few
seconds**



What about mapping?



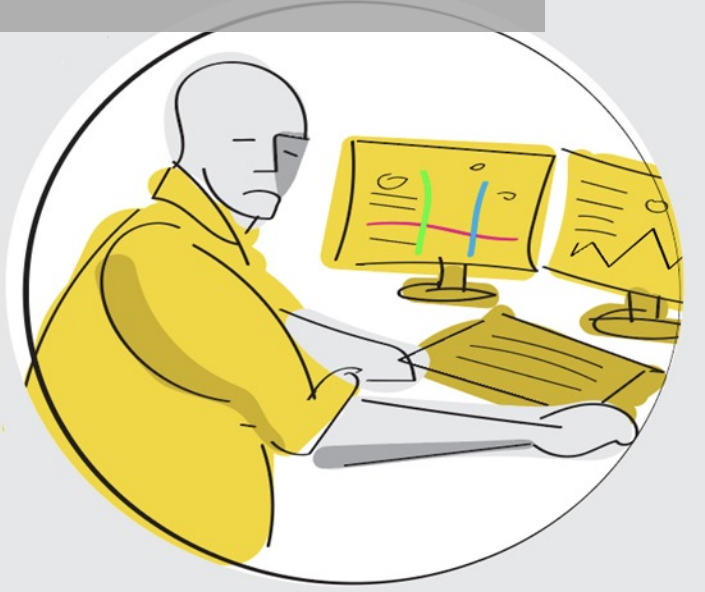
1 Detect using a **GPR cart** and mark on the ground

2 Detect using **pipe locator** and mark on the ground

3 Collect ground marks using **surveying tools**

4 Input field data in **CAD** to produce digital utility maps

! Too many steps, technicians and tools

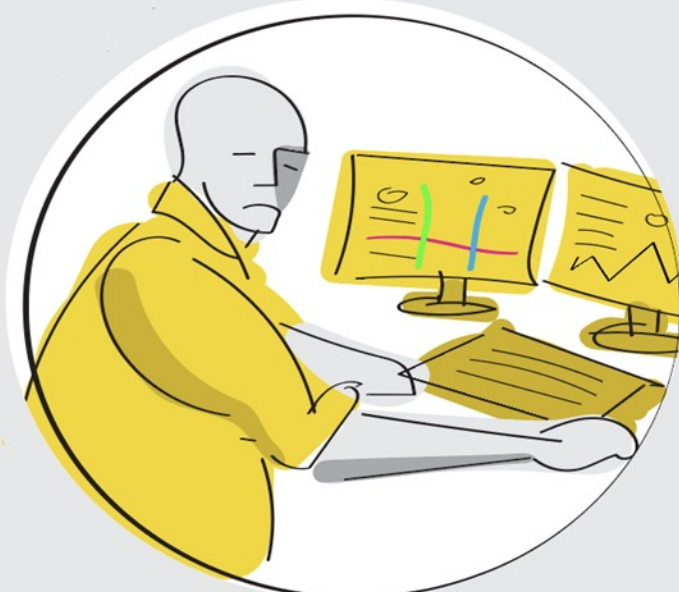
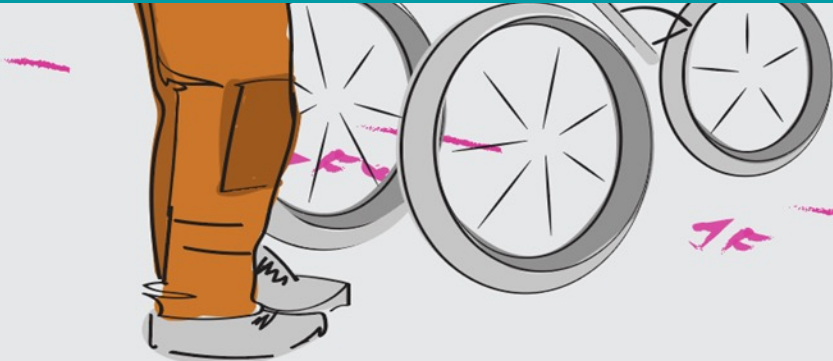




GS8000 is the most advanced

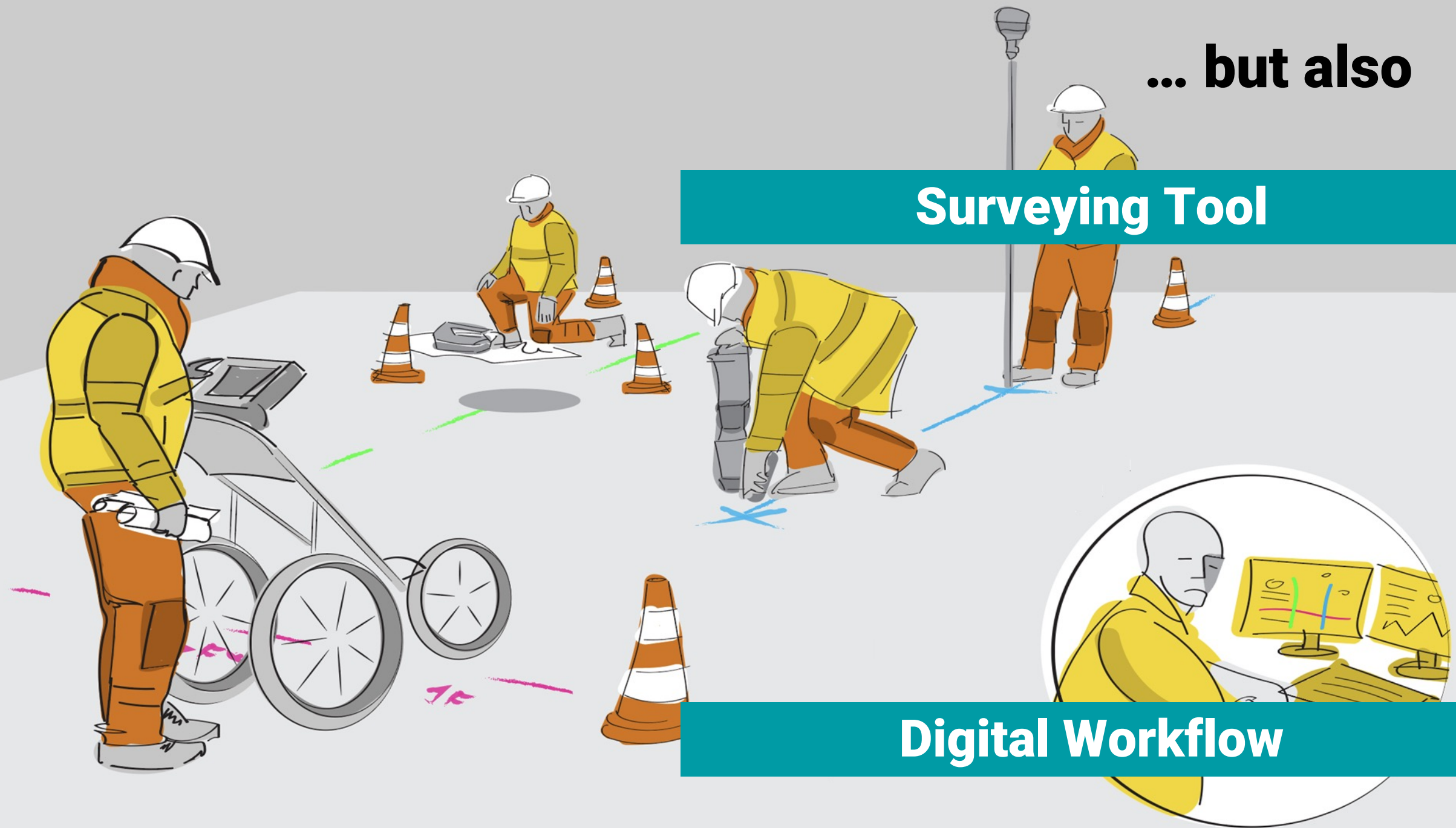


Subsurface GPR



... but also

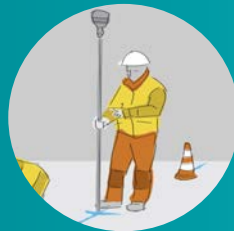
Surveying Tool



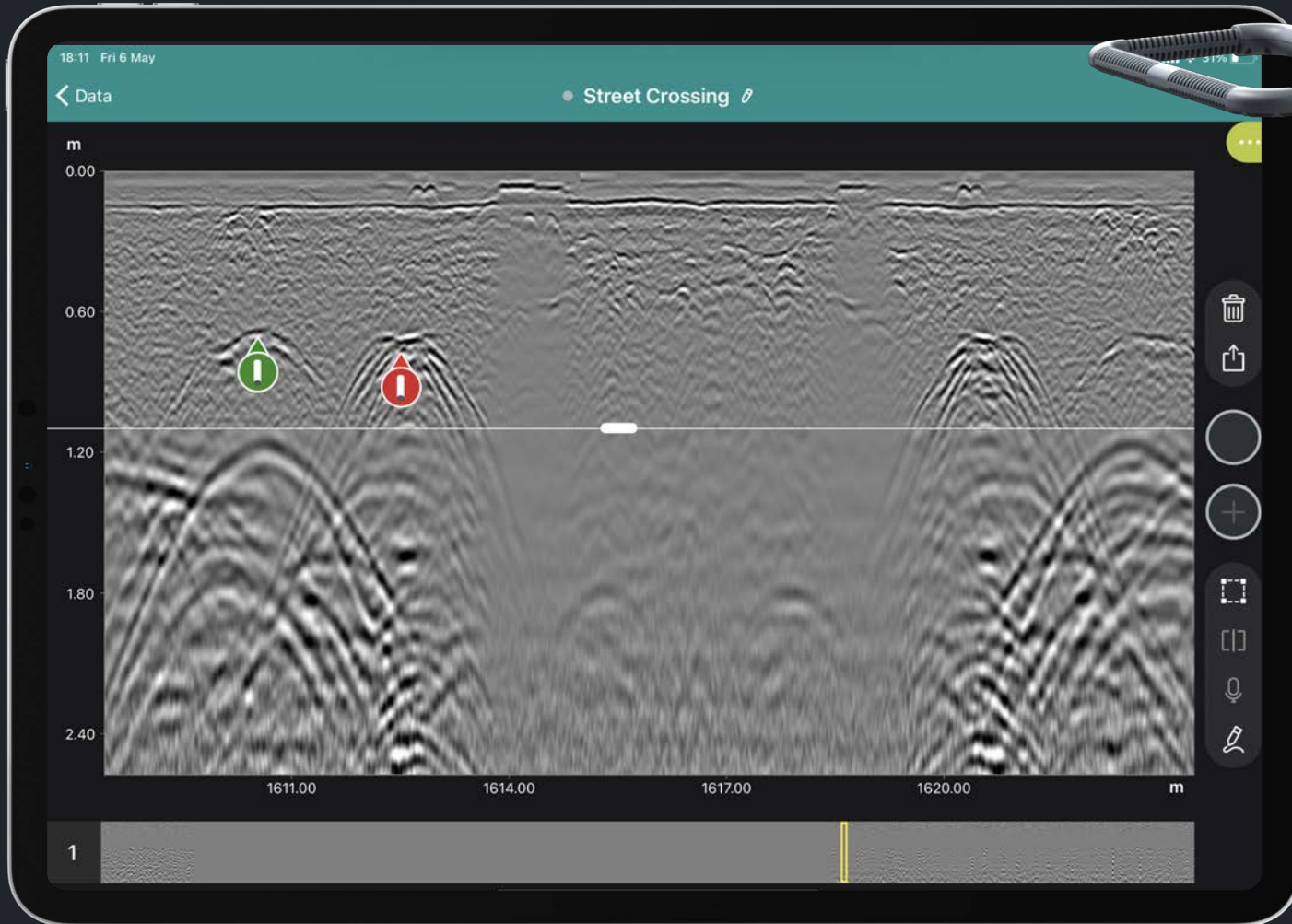
Digital Workflow

The all-in-one Subsurface Mapping System

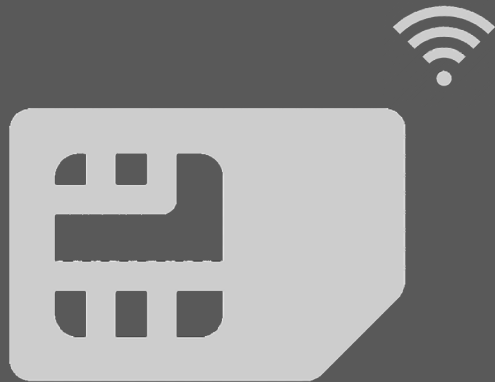
Leveraging GPR data to the next level



The most advanced technology...



Real Time



Collaboration



Deliverables

Geolocated



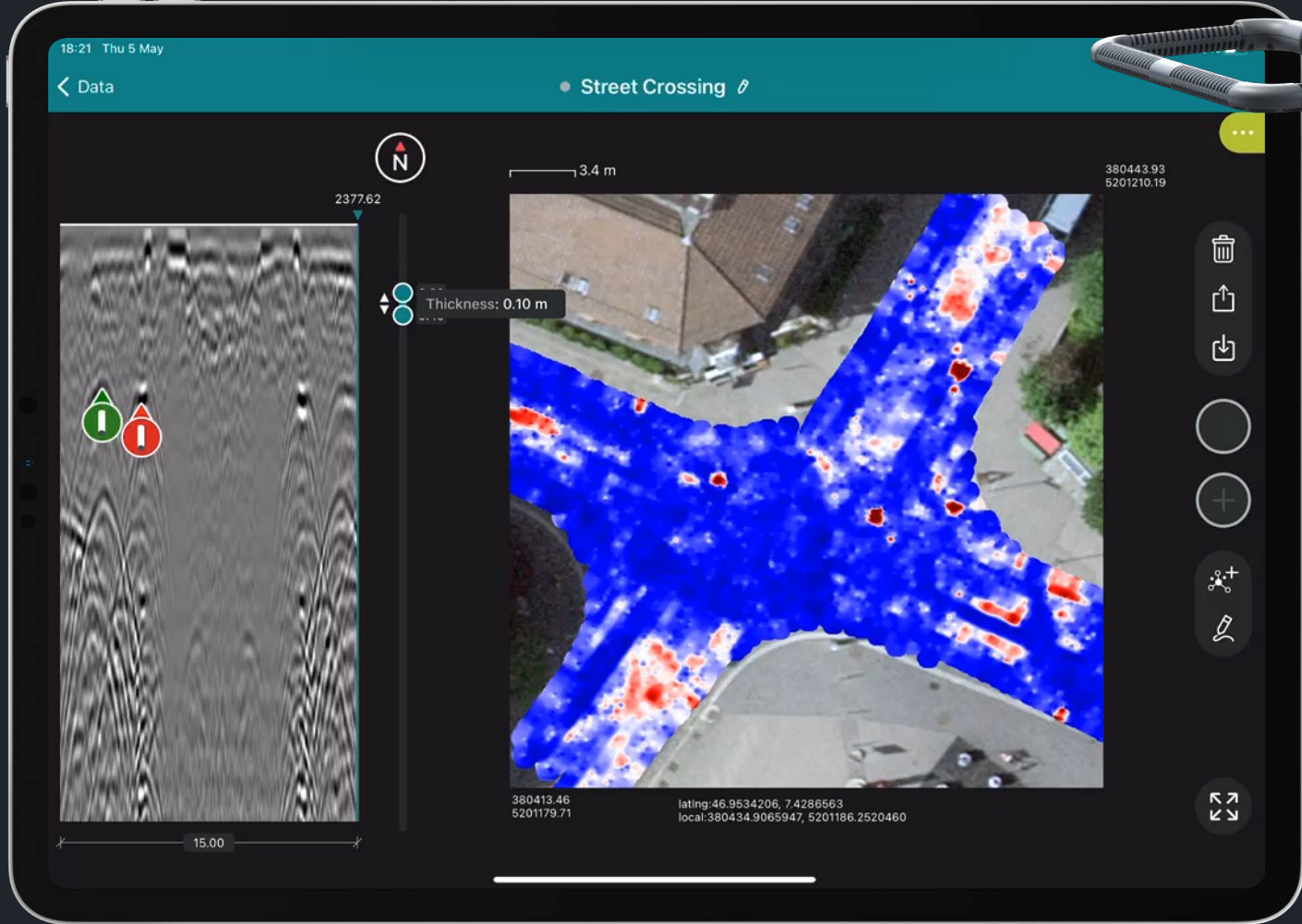
Corrected



Coordinates

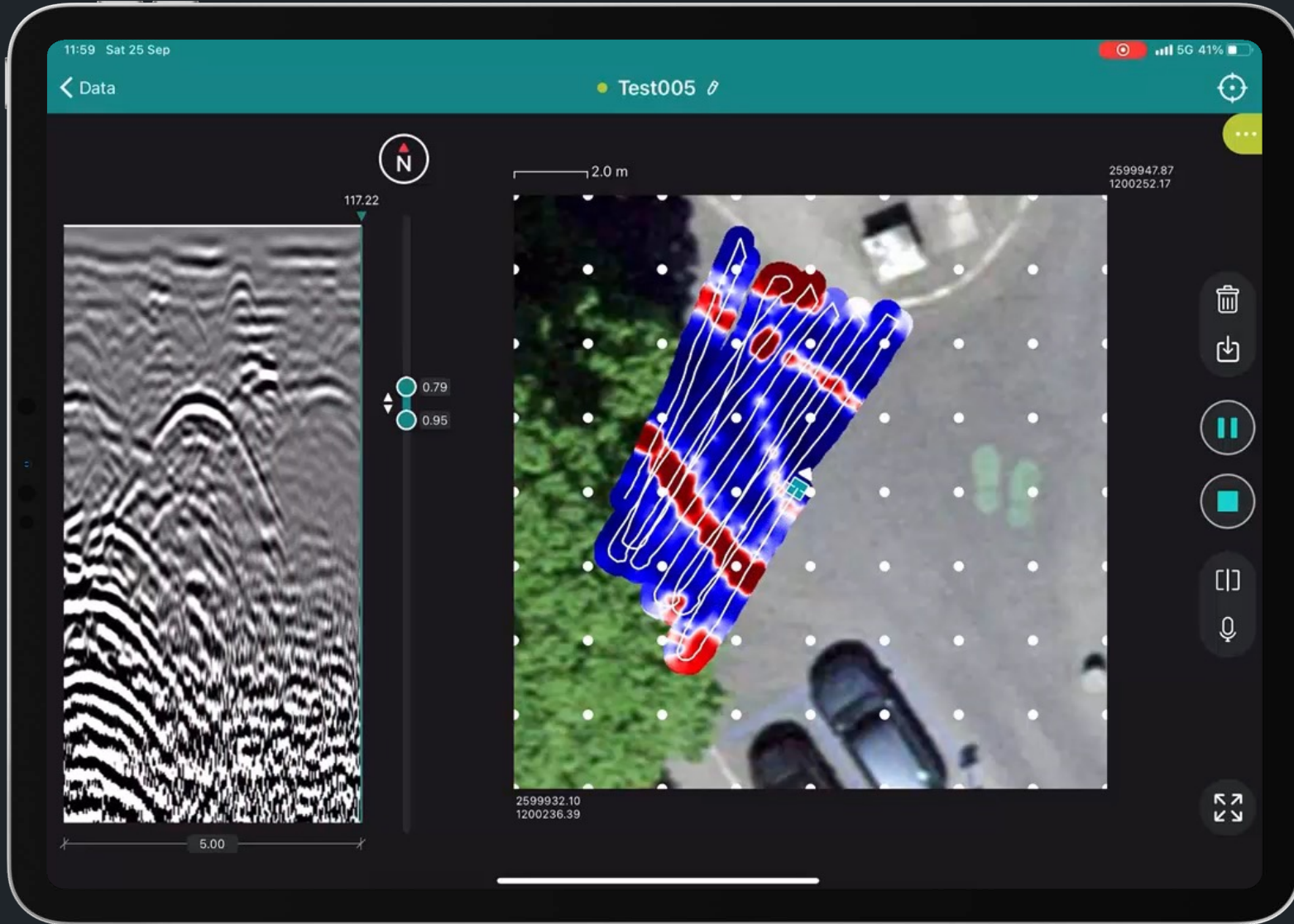


... to unveil what lies beneath





Free Path





Integrated mapping

18:16 Fri 6 May

Data Street Crossing

3.3 m

2377.62

0.73

0.89

15.00

380414.20
5201179.89

latlng:46.9534206, 7.4286563
local:380434.9065947, 5201186.2520460

- Export as Snapshot
- Save Snapshot
- Export as SEGY
- Export as DXF
- Export as KML
- Export as SHP
- Export as HTML
- Share via URL

18:09

Done pace.screeningeagle.com

Workspace

Separation Slider Depth [m] 0.00

Download

File Name	312 Test 010_20220509_180901	
Dielectric Constant (ε)	9.0	9.0
Linear Gain [dB]	-21.9	-15.6
Time Gain Compensation [dB/m]	2	2
Background Removal Depth [m]	35.77	
Separation Slider Depth [m]	0.00	

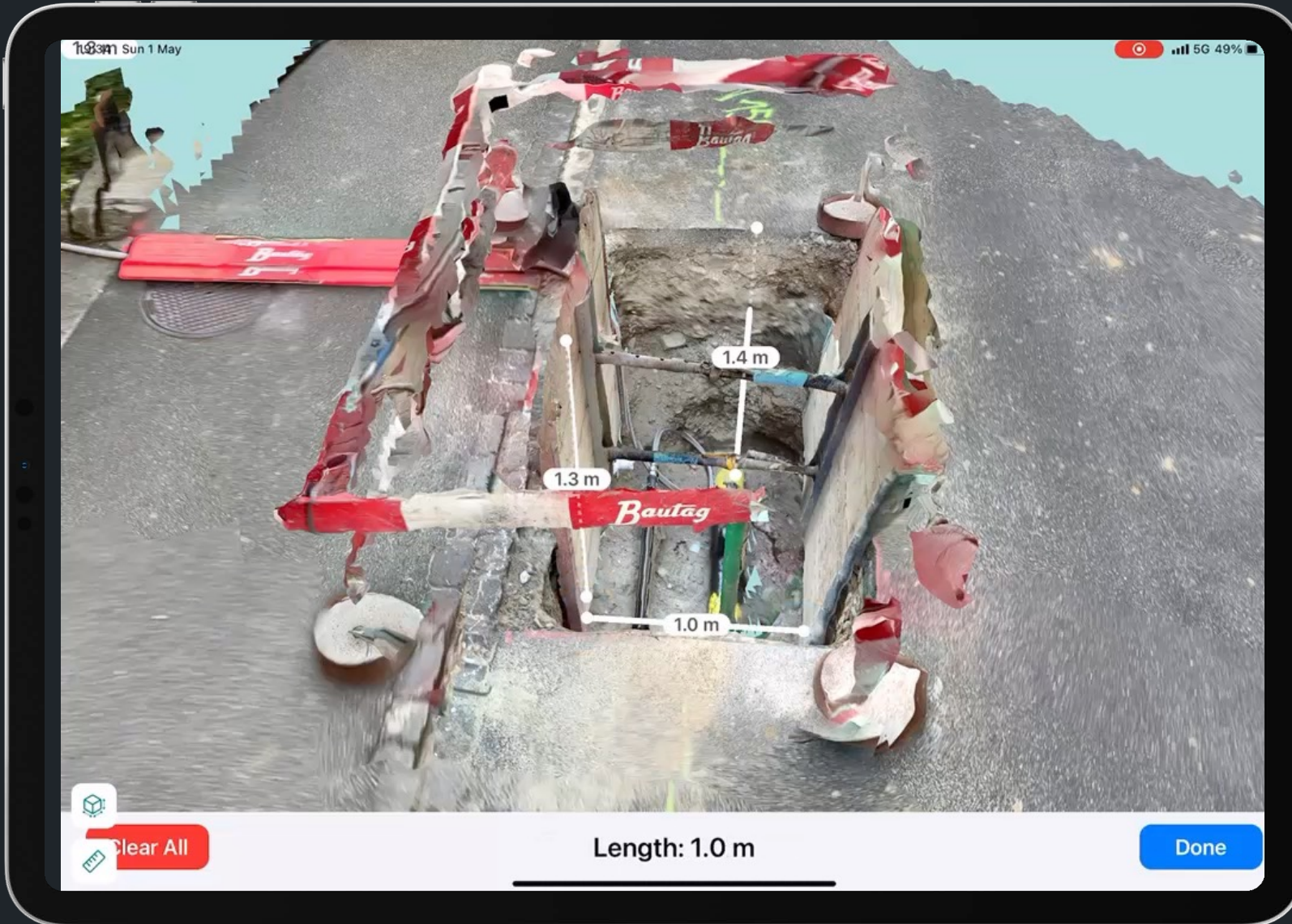
Objects

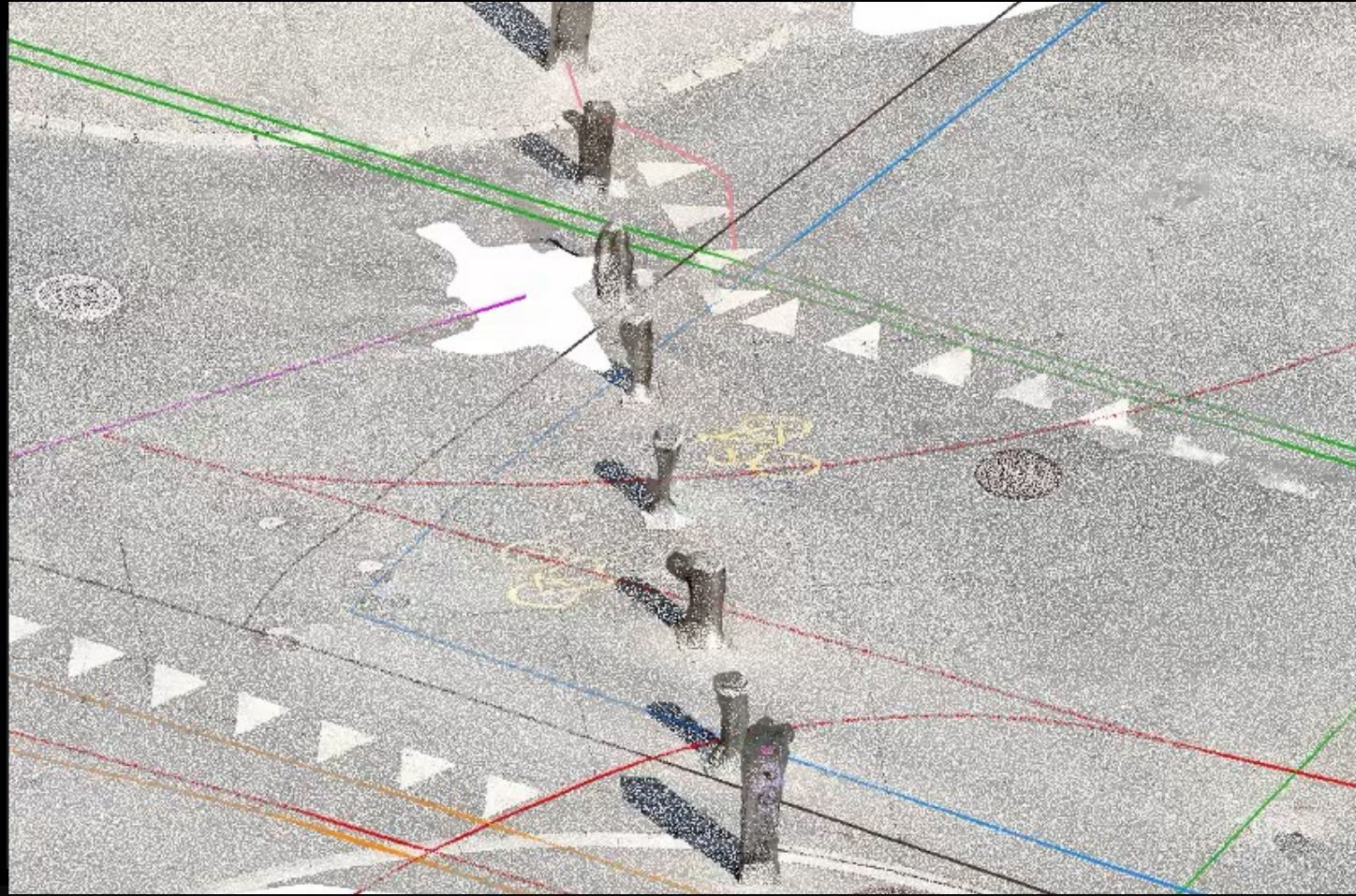
Line	Tag	Tag Type	Easting	Northing	Distance along	Calculated Depth	Set Depth	Set Size	Comment
1	1	Electricity	2599958.648	1200383.545	90.04	0.73	-	-	
1	2	Telecommunication	2599949.613	1200378.574	100.38	0.88	-	-	
1	3	Gas & Oil	2599941.519	1200375.385	119.32	0.58	-	-	
1	4	Drinking Water	2599940.597	1200375.834	109.94	1.38	-	-	
1	5	Electricity	2599938.260	1200372.329	130.37	0.45	-	-	
1	6	Drainage & Sewage	2599965.919	1200387.717	27.23	0.86	-	-	
0		Drinking Water	2599924.367	1200362.047	73.70	0.78	-	-	



Connected digital data

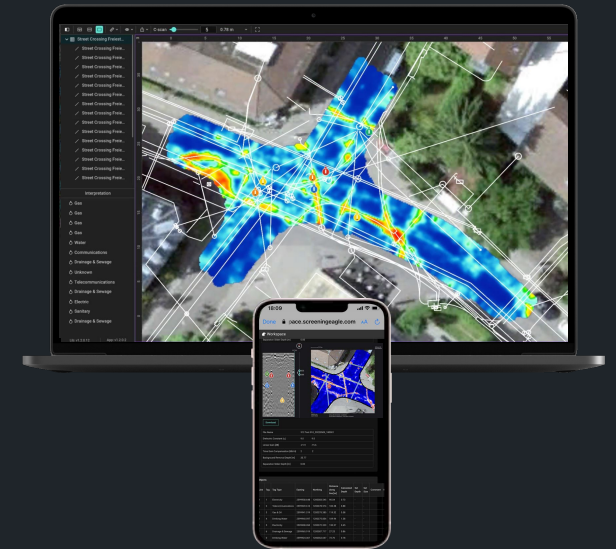
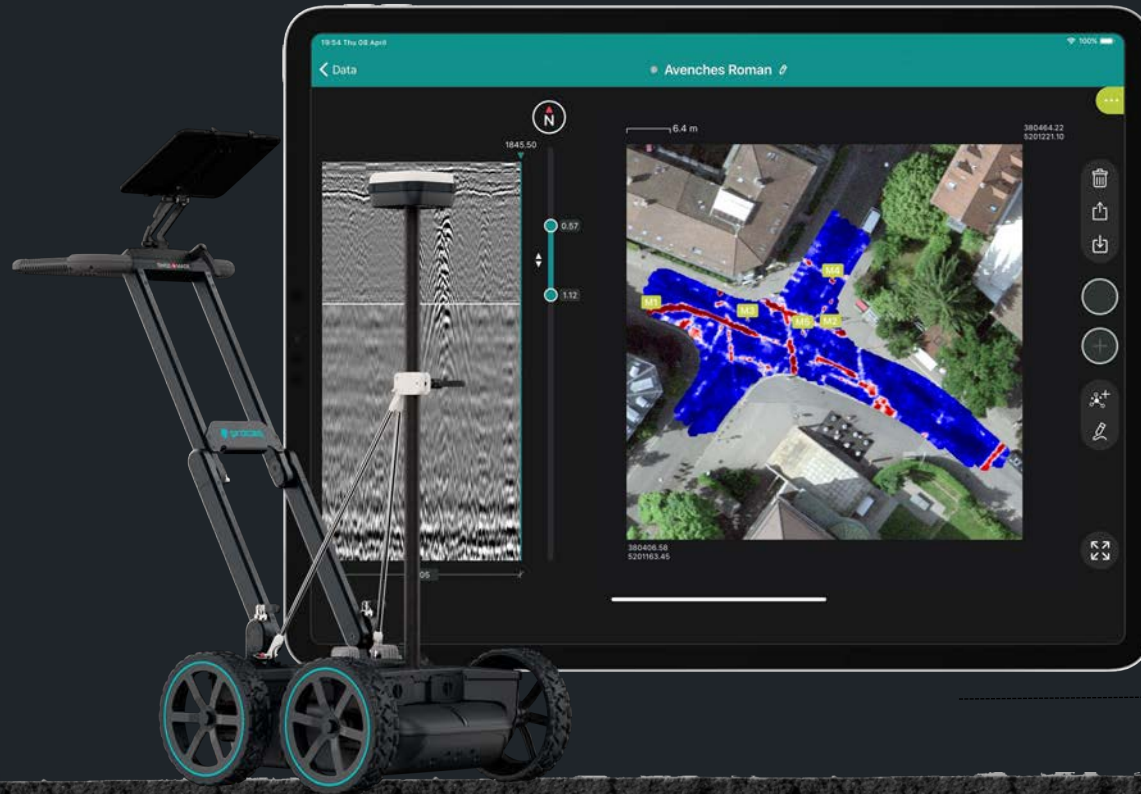
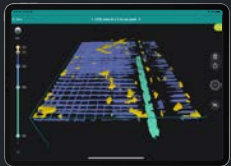
**For different
scenarios**





MacBook Pro

A smart digital ecosystem






Risto Doncev

Chief Product Officer

rd@screeningeagle.com

 <https://www.linkedin.com/in/ristodoncev/>

PROTECT
THE BUILT
WORLD
